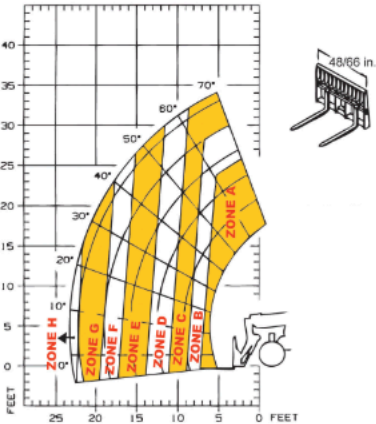


Capacities

Lift Capacity	6,000 lbs.
Maximum Lift Height	34'3"
Capacity at Maximum Lift Height	4,000 lbs.
Maximum Forward Reach	23'3"
Capacity at Maximum Forward Reach	900 lbs.
Maximum Reach Below Grade	24"

Load Chart

A	6,000 lbs.
B	5,000 lbs.
C	4,000 lbs.
D	3,000 lbs.
E	2,000 lbs.
F	1,500 lbs.
G	1,000 lbs.
H	900 lbs.



Engine

Manufacturer	Deutz
Model	TD 3.6 Tier IV
Power	74 hp
Aspiration	Turbocharged
Rated Speed	2,300 rpm

Components

Transmission	Dana 3-speed Powershift
Maximum Travel Speed	18 mph
Selective Steering	4-Wheel 2-Wheel Crab
Brakes	4-Wheel Hydraulically Actuated Internal Wet-Disc Brake
Parking Brake	Spring-Applied, Hydraulic Release (SAHR) on Front Axle
Axle Manufacturer	Dana

Hydraulics

Pump Type	Gear
Total Capacity	29 gpm
System Pressure	3,000 psi
Hydraulic Reservoir Capacity	35 gal.

General Specifications

Approximate Weight	15,100 lbs.
Length - Less Forks	16'0"
Width	7'10"
Ground Clearance	14"
Wheelbase	9'2"
Turning Radius	12'6"
Overall Height	7'10"
Frame Leveling	10°
Fuel Capacity	29 gal.

Tire Options

15.00 x 19.5/12 PR
15.00 x 19.5/12 PR Foam-Filled
15.00 x 19.5 Solid Rubber